

Is That O.K.?

Rhett Frazier Inc.
Donny Gruendler – Drums

Performance Notes and Play-along Chart



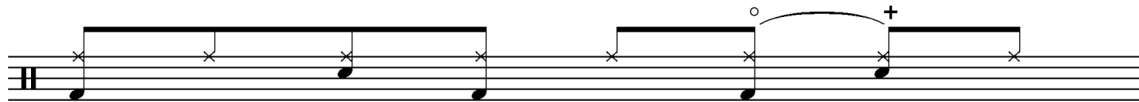
Rhett Frazier Inc.

2007 Product Catalog

This is a play-along chart features the drumming of Donny Gruendler from Rhett Frazier Inc's 2007 Product Catalog LP. The song is a Shuffled 16th Pop/Rock/Funk chart at 100 bpm. In addition, this song is comprised of two main grooves and two main fills. It is extremely important that you practice these items individually – before attempting the chart.

They are as follows:

The **Verse groove** is played on tight Hihat and you will notice the Hihat opening every measure on the “and” of beat 3. For example:

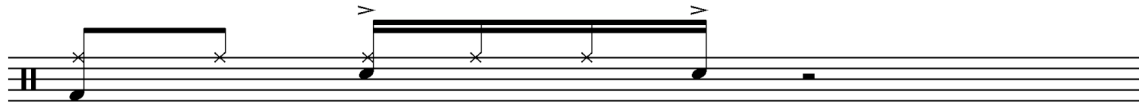


Verse Figure

In addition (and at the end of the first verse), the band plays a dotted eighth and sixteenth figure that is played as follows:



With this in mind, the drums voice that figure on the snare drum (all while the hihat fills in the two sixteenth notes in between).



The **Chorus groove** is played on the Hihats as well; but you should loosen them a bit to achieve a sloshy sound. Furthermore, the snare drum is on every beat (which is reminiscent of many Motown and Sly and the Family grooves). For example:

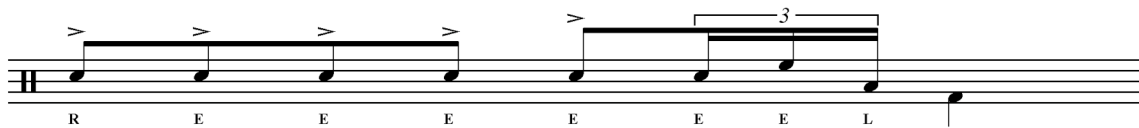


Chorus Figure

Just as in the Verse, there is a figure present at the end of the Chorus. Thus, the band is playing:



Consequently, the drums voice this on the snare drum and then play an accent fill (during the quarter note rest on beat 4).



Now that you are familiar with these grooves -- it is time to play the chart. Enjoy!

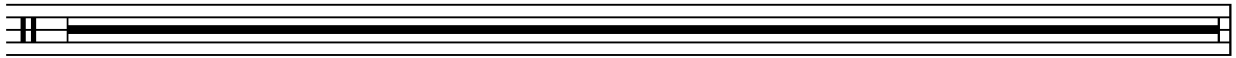
Is That O.K.?

♩ = 100

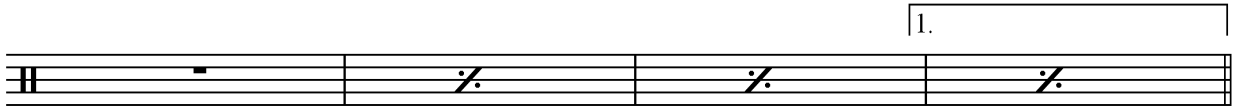
Rhett Frazier Inc.
Donny Gruendler -- Drums

Intro Guitar and Loop

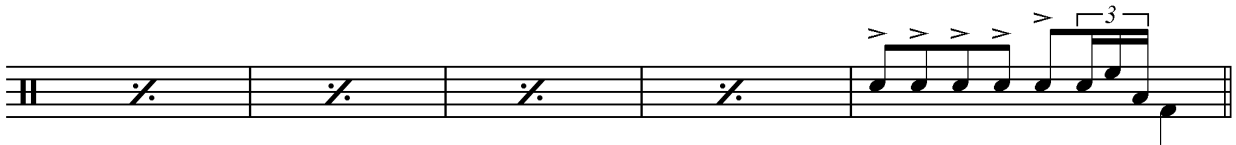
4



Verse Tight Hihat



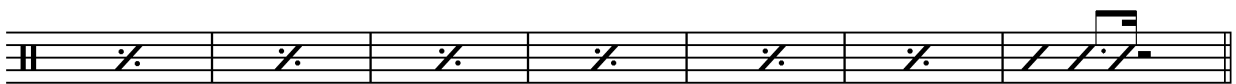
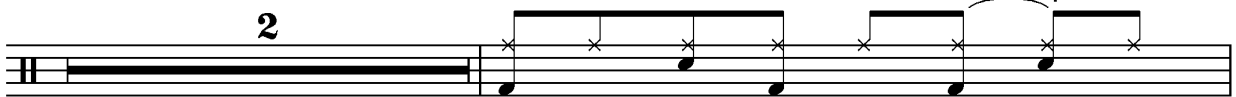
Chorus Slosly Hihat



Verse 2 Tight Hihat

Intro Guitar and Loop

2



Chorus Slosly Hihat



A musical staff in treble clef. The first three measures contain a slash with a vertical line through it (//), indicating a rest or a specific rhythmic pattern. The fourth measure contains a sequence of eighth notes: G4, A4, B4, C5, with accents (>) above each. The fifth measure contains a triplet of eighth notes: G4, A4, B4, with a '3' above the notes and a slur underneath.

BreakDown - Drums Out
8

(9)

A musical staff in treble clef. The first measure is completely filled with a solid black bar. The second measure contains a whole rest.

Guitar Solo - Chorus Groove) Sloshy Hihat

A musical staff in treble clef. The first two measures contain eighth notes: G4, A4, B4, C5 in the first measure, and G4, A4, B4, C5 in the second. Above each eighth note is an 'x' mark, representing a hihat. The next three measures contain a slash with a vertical line through it (//).

A musical staff in treble clef. All four measures contain a slash with a vertical line through it (//).

Chorus - Outro

3X

A musical staff in treble clef. The first measure contains eighth notes: G4, A4, B4, C5 with 'x' marks above each. The next seven measures contain a slash with a vertical line through it (//). The staff ends with a double bar line and repeat dots.

A musical staff in treble clef. The first measure contains an eighth note G4 with an accent (>) above it. The second measure contains a whole rest.